

MEASUREMENT INSTRUMENTS FOR WHEELSETS



BUILT TO LAST



www.ascorail.pl



Youtube - ASCO RAIL

ASCO RAIL sp. z o.o.

ul. Wielowiejska 53, 44-120 Pyskowice
POLAND

T: +48 32 230 45 70

F: +48 32 233 21 34

export@ascorail.pl www.ascorail.pl



BUILT TO LAST

LASER WHEEL PROFILE MEASURING INSTRUMENT



A LASER WHEEL PROFILE MEASURING INSTRUMENT IS DESIGNED FOR THE MEASURING OF

- Wheel flange height,
- Wheel flange thickness,
- Wheel flange slope,
- Full profile scanning and analyze of wheel rolling surface,
- Maintaining of electronic wear data base,
- Control of tolerances and sorting in the course of checkup, examination, repair and formation of railway wheel sets.

CHARACTERISTICS	DATA	COMPLETE SET TO BE DELIVERED INCLUDE	
Measurement range		A measuring device	1
Flange height Ow(Sh)	20 - 45 mm	Calibration and control set - optional	1
Flange thickness Og(Sd)	20 - 50 mm	Software (a computer programme)	1
Flange slope qR	1 - 15 mm	Device (PDA) to visualization and record the measurement results (wireless connection with profilometer)	1
Rim thickness	36 - 100 mm	Chargers set	1
Measurement error		Cables for computer or printer connection	1
Flange height Ow(Sh)	±0,05 mm		
Flange thickness Og(Sd)	±0,05 mm		
Flange slope qR	±0,1 mm		
The number of measurements that can be taken before battery recharge is not less than	5000 for Standard IKP and 2200 for Short and Super-short		
Profilometer dimensions	Standard: 214 x 156 x 54 mm Short: 201 x 114 x 54 mm Super-short: 213,5 x 90 x 54 mm		
Resolution	0,01 mm		
Weight	0,6 kg		
Power supply (laser scanning module)	3,7V, Li-ion rechargeable battery 5400mAh for standard IKP and 2400mAh for Short and SShort		



ELECTRONIC WHEEL DIAMETER MEASURING INSTRUMENT



The gauge is designed for measuring wheel rolling circle diameter (amount of wear) of railway, metro and tram in the course of checkup, examination, repair and formation of wheel sets. Measurements are made directly on rolling stock without wheel set roll-out.

FEATURES

- Measurement of the wheel rolling diameter without need of wheel set roll-out,
- Calculating the average of the measurements,
- Verification, registration and identification of measured wheels (optionally with tablet),
- Saving the measuring data to the memory (optionally with PDA).

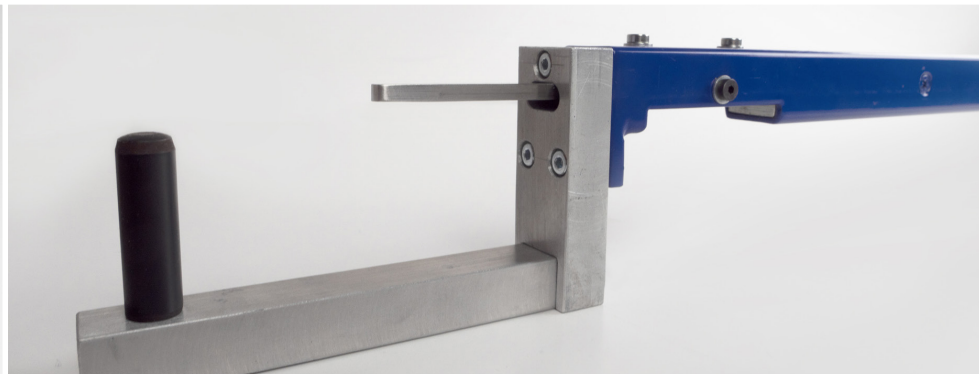
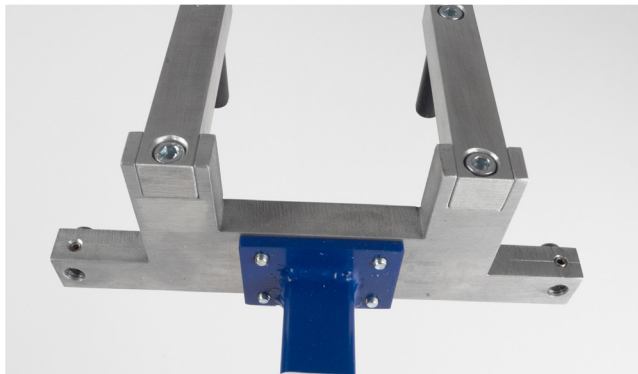
CHARACTERISTICS	DATA	COMPLETE SET TO BE DELIVERED INCLUDE	
Measurement range	600 - 1300 mm (or other at client's request)	Measuring device	1
Accuracy	0,2 mm	Calibration set - optional	1
Battery	2 x AA rechargeable	Software – optional	1
Resolution	0,01 mm	Device (PDA) to visualization and record the measurement results (wireless connection with a measuring device) - optional	1
Internal memory capacity	Up to 2000 measurements	Charger set	1
Weight	0,5 kg	Case	1



BACK TO BACK WHEEL DISTANCE MEASURING INSTRUMENT

The instrument is designed to perform manual, mechanical measurement of the distance of the inner wheel faces of the wheel sets.

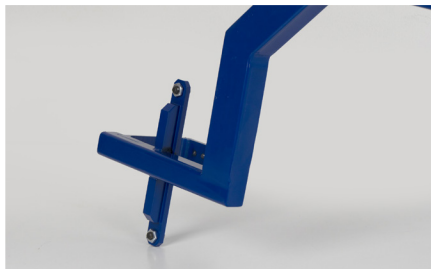
CHARACTERISTICS	DATA	COMPLETE SET TO BE DELIVERED INCLUDE	
Measurement range of the wheel faces inner distance	1345 – 1375 mm	A measuring device	1
Measurement error	± 0,1 mm	Case	1
Weight	1 kg		



3.6 WHEEL DIAMETER MEASURING INSTRUMENT

The instrument is designed to perform manual, mechanical measurement of the wheel diameter.

CHARACTERISTICS	DATA	COMPLETE SET TO BE DELIVERED INCLUDE	
Measurement range	A) 600 – 800 mm, B) 800 – 1050 mm, C) 1050 – 1270 mm	Measuring device	1
Measurement error	± 0,1 mm		
Reading of results	metre scale		
Weight	1,5 kg		



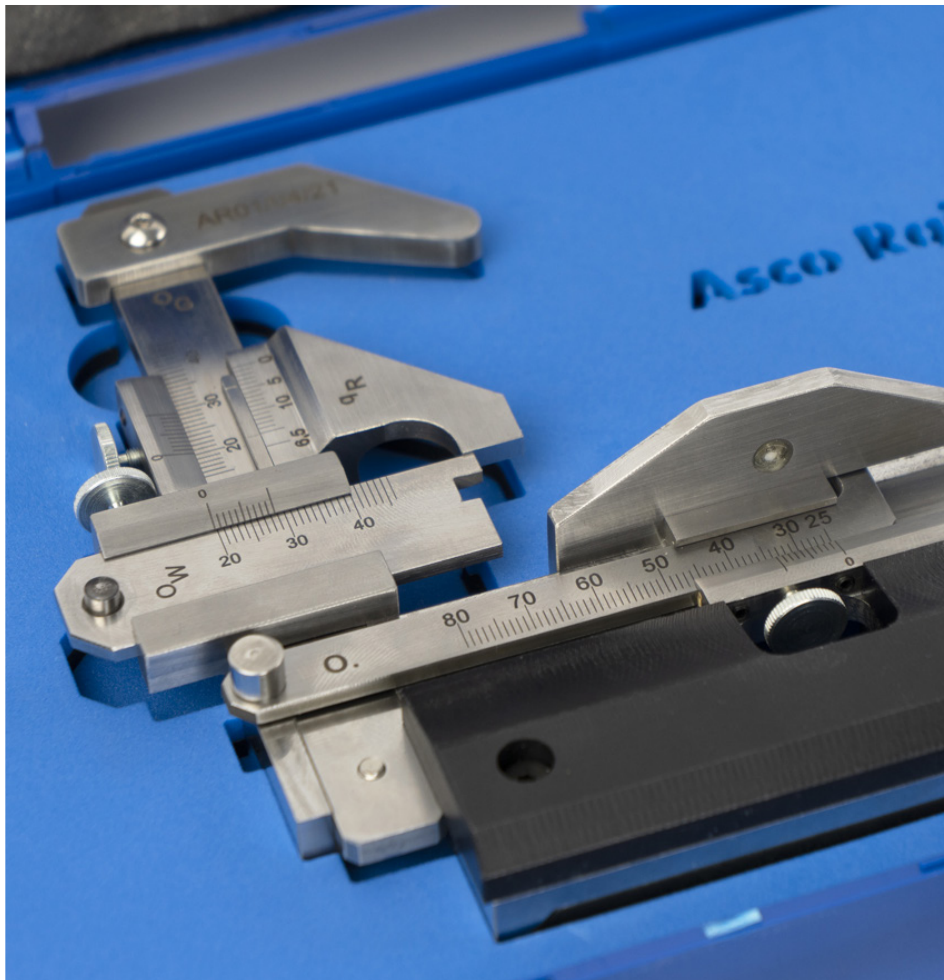
CALIPER FOR RAILWAY WHEELS PROFILE MEASUREMENT



THE DEVICE IS DESIGNED FOR MEASURING THE
PARAMETERS OF EXTERNAL PROFILE OF RAILWAY
WHEEL:

- Flange height O_w (Sh),
- Flange thickness O_g (Sd),
- Flange slope q_R ,
- Rim thickness O (optional).

CHARACTERISTICS	DATA	COMPLETE SET TO BE DELIVERED INCLUDE	
Measurement range		Measuring device	1
Flange height O_w (Sh)	20 - 36 mm	Case	1
Flange thickness O_g (Sd)	15 - 36 mm		
Flange slope q_R	0 - 13 mm		
Rim thickness O (optional)	25 - 80 mm		
Measurement error			
Flange height ow (sh)	0,1 mm		
Flange thickness og (sd)	0,1 mm		
Flange slope qr	0,5 mm		
Rim thickness O	0,1 mm		
Weight	0,6 kg		



ASCO RAIL sp. z o.o.

ul. Wielowiejska 53

44-120 Pyskowice

POLAND

T: +48 32 230 45 70

F: +48 32 233 21 34

export@ascorail.pl

www.ascorail.pl

BUILT TO LAST



www.ascorail.pl



Youtube - ASCO RAIL

PARTNER REPRESENTATIVE

